

Figure S1: Sensitivity of modelled slope to active layer thickness factor n_a and active layer exchange ratio α in the 'Original flume' (OF) event sequence.

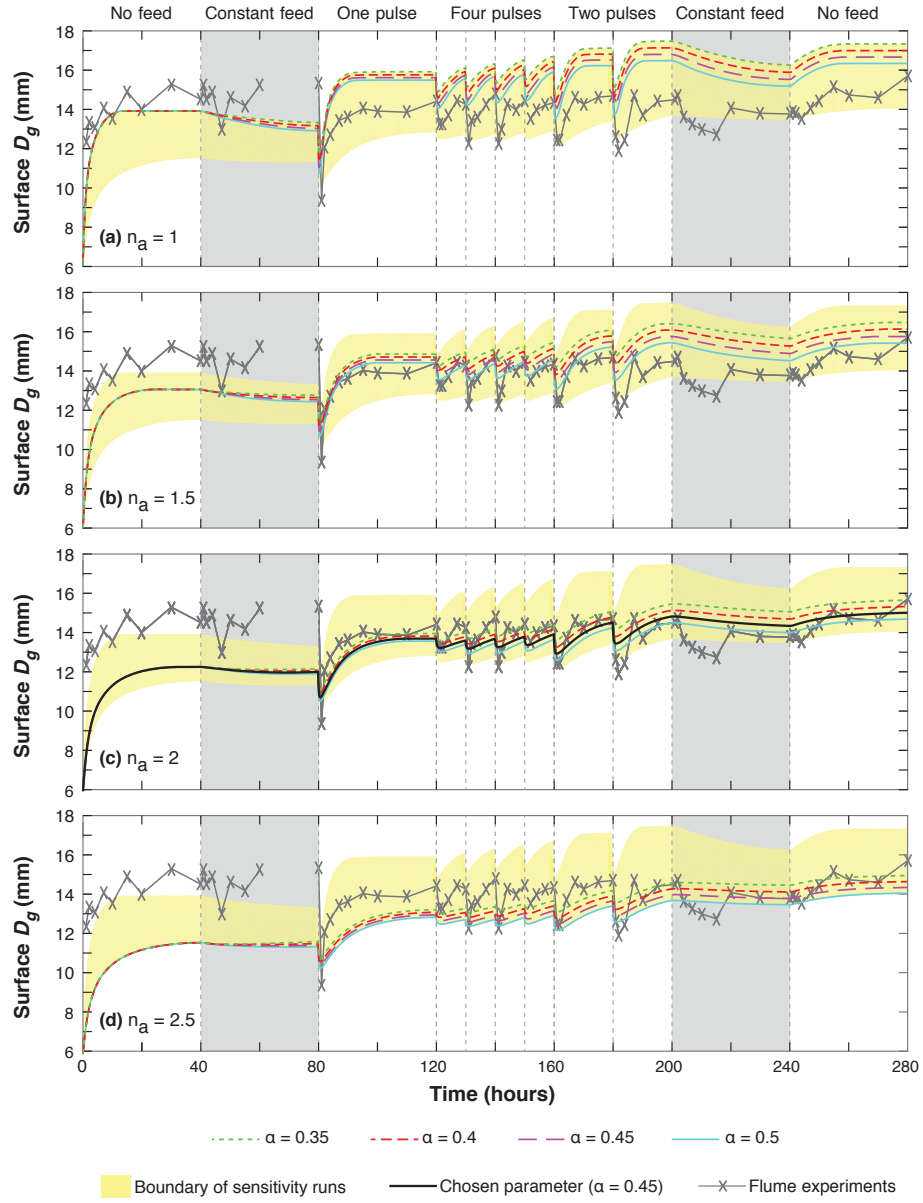


Figure S2: Sensitivity of modelled Surface D_g to active layer thickness factor n_a and active layer exchange ratio α in the 'Original flume' (OF) event sequence.

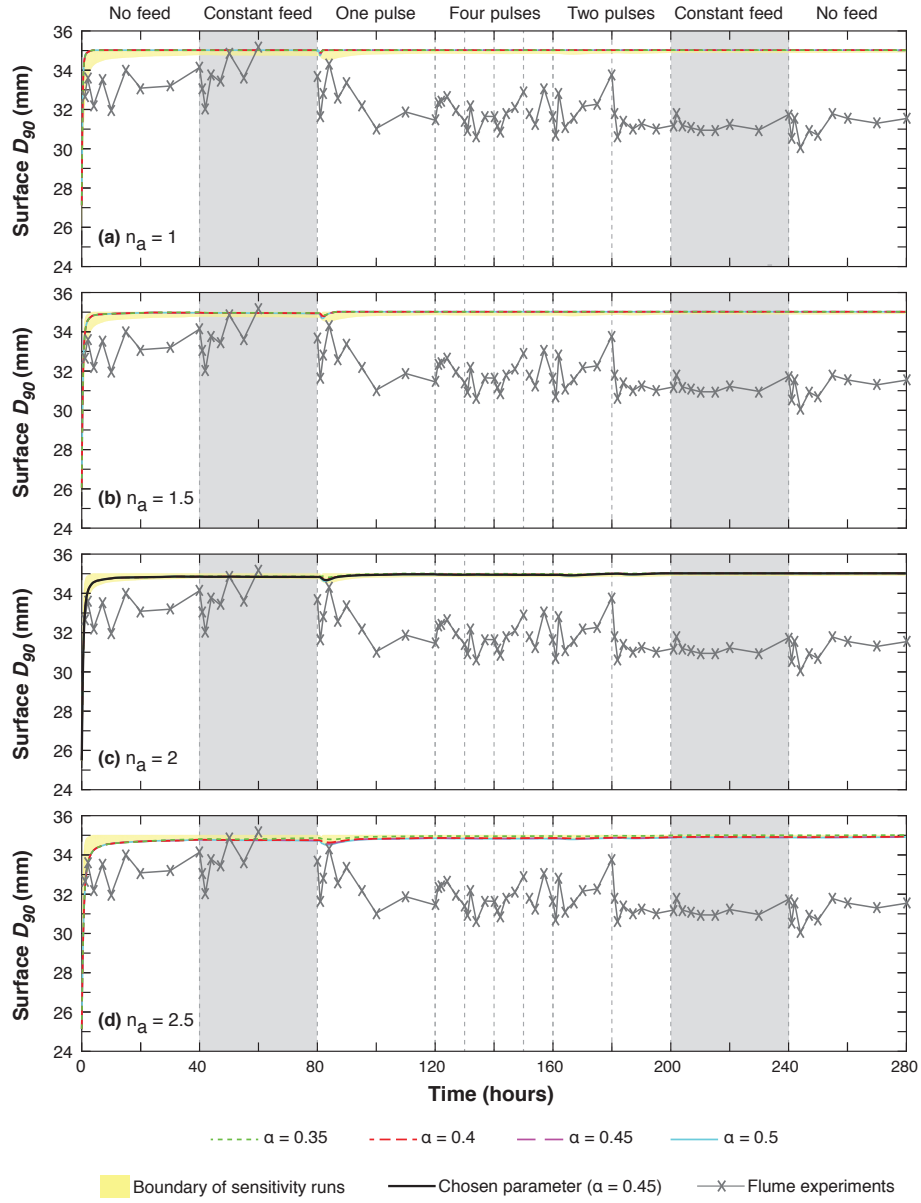


Figure S3: Sensitivity of modelled Surface D_{90} to active layer thickness factor n_a and active layer exchange ratio α in the 'Original flume' (OF) event sequence.

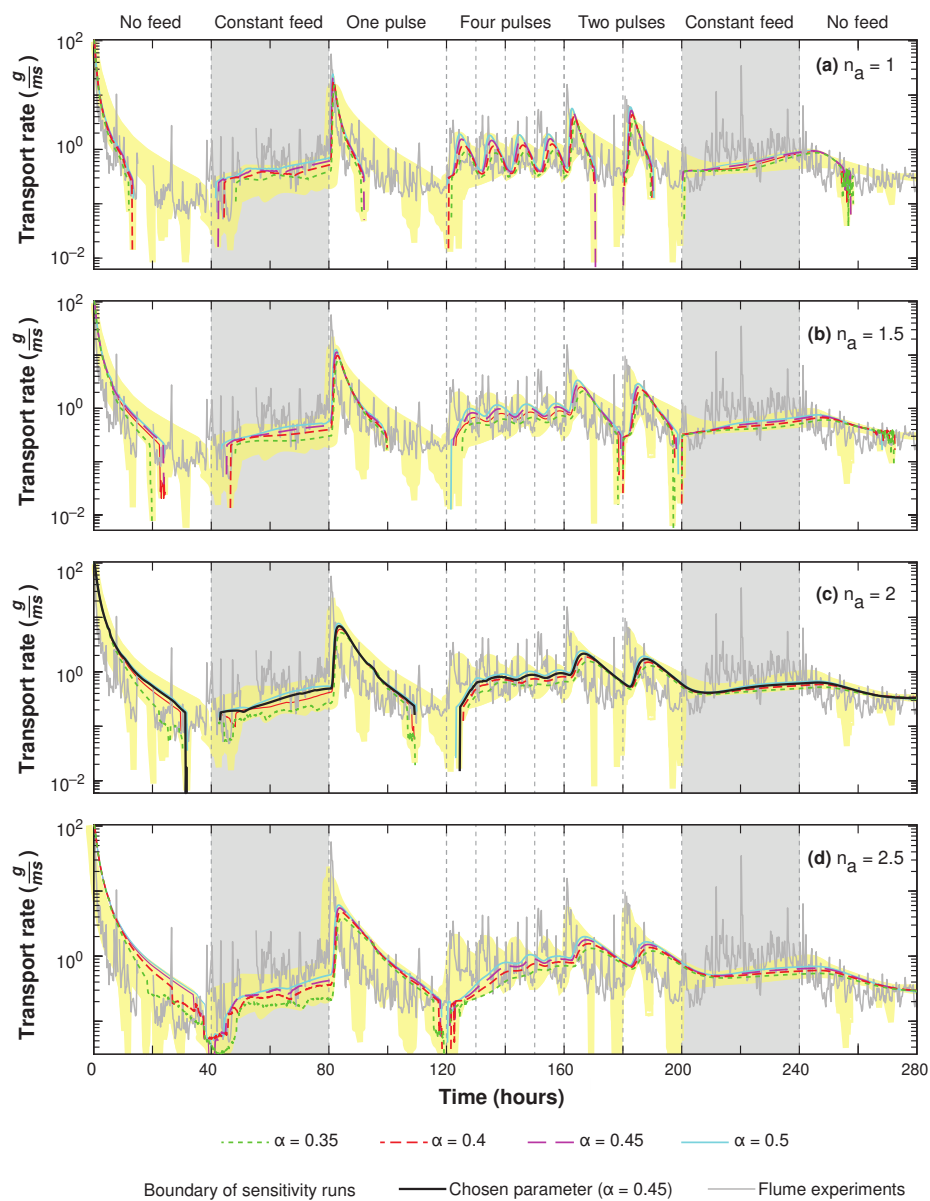


Figure S4: Sensitivity of modelled transport rate to active layer thickness factor n_a and active layer exchange ratio α in the 'Original flume' (OF) event sequence.